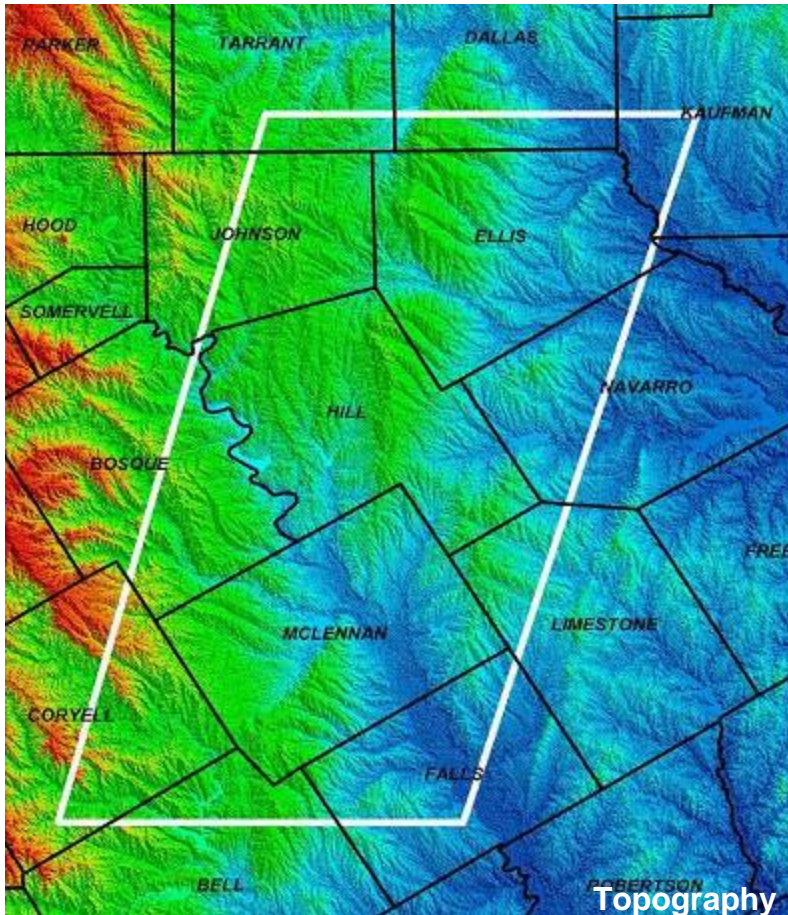


Sub-Thrust Barnett Shale Play

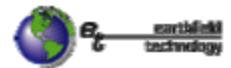


Earthfield Technology, is pleased to offer a detailed analysis of the Barnett Shale in front of and beneath the Ouachita Overthrust. Our extensive experience in this area suggests that understanding the nature of the basement and Overthrust geometry are key to understanding:

- Shale Thickness
- Shale Fracturing/Faulting
- Heat Flow
- Hydrothermal Fluid Locations
- Carbonate Karsting
- Gas Maturation

PRODUCTS TO BE INCLUDED:

- Detailed topographic / magnetic / gravity maps & data
- Detailed depth to basement map with faults
- Detailed mapping of Ouachita frontal & interior zones, including location of NW-SE tear faults
- Location of sub-basement intrusives (heat sources)
- Top Ellenberger map from 3-d gravity inversion with suggested locations of thick Viola formation
- Barnett extent / fairway map with high-grade leads identified



Earthfield Technology, located in Houston, Texas has been supplying the oil and gas industry with state of the art integrated gravity and magnetic interpretation since 1985.

For pricing and additional information please contact:

EARTHFIELD TECHNOLOGY

Bill Cathey – 14023 Whispering Valley – Cypress, TX 77429

Tel: 281-304-5551 – Fax: 281-304-4932 – Email: earthfield@sbcglobal.net

www.earthfieldtechnology.com